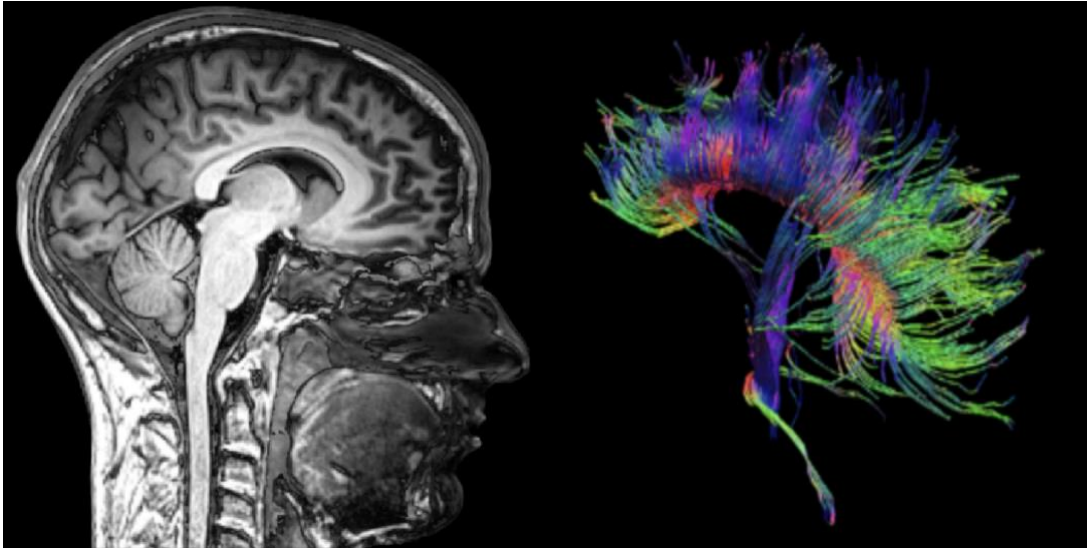


Have You or Someone You Know Been Diagnosed With Schizophrenia, Schizoaffective, or Bipolar Disorder?



The Adolescent Brain-Behavior Research Center (ABBRC) at UCLA is looking for youth to participate in a MRI study on Memory, Learning, and Perception. After completion of the study, participants will receive a picture of their brain.

We are looking for individuals between the ages of **12-21** who have been diagnosed with schizophrenia, schizoaffective, or bipolar disorder.

You/your child may be eligible if he/she

- Is between ages 12-21
- Onset of schizophrenia, schizoaffective, or bipolar disorder within past two years

Participation involves

- Two visits to UCLA
- Brain scan (MRI)
- Questionnaires and interview; cognitive assessments

PHONE: (310) 206-9181

EMAIL: karlsgodtlab@ucla.edu

Scan QR code to email us



A confidential phone screen will be conducted to determine your child's initial eligibility. **Individuals under 18 must have their parents call.**

Principal Investigators: Carrie Bearden, Ph.D. and Katherine Karlsgodt, Ph.D.