



## “Autism 2012”

### Autism Spectrum Disorders: Research Update and Evidence-Based Treatment Models

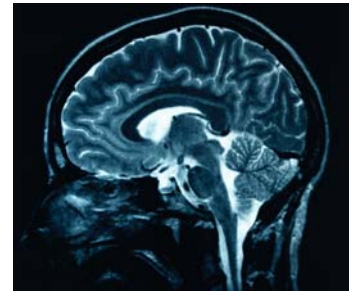
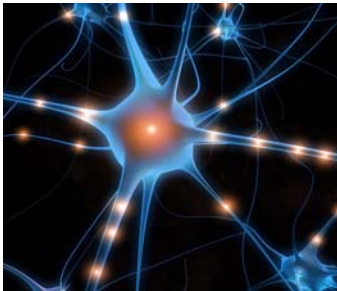
Date: **Friday, February 3, 2012** Time: **8:00AM – 5:00PM**

Location: Neuroscience Research Building Auditorium at UCLA

**Registration Fees:** MD/PhD/other doctorates - \$175; All others, including RNs - \$135

Presented by the

**UCLA Center for Autism Research and Treatment (CART)**



This full-day symposium is for physicians, psychiatrists, psychologists, other health professionals, teachers, autism service providers, and any others interested in learning of the latest breakthroughs in research and treatment in autism spectrum disorders (ASD). Nationally-renowned CART faculty (including Drs. Geschwind, Bookheimer, Dapretto, Kasari and McCracken) will participate as key speakers and/or discussants to provide an overview of the latest scientific findings about etiological factors, core deficits, biomarkers, early diagnosis, and innovative treatment models for infants to young adults with ASD. The complex role of genetics and the use of brain imaging, electrophysiology and eye-tracking as state-of-the-art methods for understanding and developing effective treatments for ASD, and for implementing evidence-based practices in schools and homes, will be presented. An expert clinical panel will include case scenarios and consideration of community resources to discuss how to make a thorough assessment and individual treatment plan for individuals with ASD. This continuing education symposium is designed to equip community practitioners so that they can apply the most effective “best practices” for assessment and treatment for families, children and young adults with autism spectrum disorders.

**Please visit our website - [www.autism.ucla.edu](http://www.autism.ucla.edu) – for more information including map, directions and link to registration website.**

Contact: [Info@autism.ucla.edu](mailto:Info@autism.ucla.edu) or Dr. Candace J. Wilkinson - 310.825.9041



## UCLA Center for Autism Research and Treatment (CART)

**CART “Autism 2012” Symposium – Feb. 3, 2012**

**“Autism Spectrum Disorders: Research Update and Evidence-Based Treatment Models”**

Time	Presentations	Speakers
8:00 – 8:30	<b>Registration and Continental Breakfast in NRB Lobby</b>	
8:30 – 8:45	Welcome and Introductory Remarks – by Symposium Co-Chairs [& pre-activity evaluations]	Susan Bookheimer, Ph.D., Dan Geschwind, M.D., Ph.D.
8:45 – 9:25	<i>Combining the Signs of Autism in Infancy to Improve the Prediction of Diagnostic Outcome</i>	Ted Hutman, Ph.D.
9:25 – 10:05	<i>Electrophysiological Biomarkers in Children with ASD</i>	Shafali Jeste, M.D.
10:05 - 10:45	<i>Disseminating Evidence-Based Interventions into the Community: Promises and Challenges</i>	Connie Kasari, Ph.D.
10:45 - 11:00	<b>BREAK</b>	
11:00 - 12:00	<b>Panel Discussion with Vignette-Based Case Analysis:</b> <i>Assessment and Treatment Planning for Various Case Scenarios in Autism Spectrum Disorders</i> [ & case vignette activity evaluations]	Expert Clinicians (see list of Presenters)
12:00 – 1:00	<b>LUNCH</b>	
1:00 – 1:45	<i>Social Skills Training for Adolescents and Young Adults with Autism Spectrum Disorders: The UCLA PEERS Program</i>	Elizabeth Laugeson, Psy.D.
1:45 – 2:30	<i>Advances in Autism Spectrum Disorder (ASD) Genetics</i>	Dan Geschwind, M.D., Ph.D.
2:30 – 2:45	<b>BREAK</b>	
2:45 – 3:30	<i>Neuroimaging Signatures of Autism</i>	Mirella Dapretto, Ph.D.
3:30 – 4:30	<b>Panel Discussion: “Ask the Experts”</b>	All Speakers
4:30 – 5:00	Post Activity Evaluations and Closing Comments	

This activity is offered by the [UCLA Office of Continuing Medical Education \(CME\)](#), an accredited CME provider.

**ACCREDITATION:** The Office of Continuing Medical Education, David Geffen School of Medicine at UCLA, is accredited by the Accreditation Council for Continuing Medical Education to provide continuing medical education for physicians. The Office of Continuing Medical Education, David Geffen School of Medicine at UCLA, designates this live activity for a maximum of 6.5 AMA PRA Category 1 Credits™. Physicians should claim only the credit commensurate with the extent of their participation in the activity.

**UCLA CART:** This symposium is presented by the **UCLA Center for Autism Research and Treatment (CART)**. Since the 1950s, UCLA has played a leading role in the history of autism research. In 2003, UCLA CART was established as one of eight national centers in the National Institutes of Health (NIH) funded research initiative, Studies to Advance Autism Research and Treatment (STAART). Since 2007, CART was awarded two new prestigious NIH Autism Centers of Excellence (ACE) grants, as one of 6 ACE Centers in the nation and the lead research site in an ACE Genetics Network.

Please visit the [CART website](#) for information about faculty, research projects and clinical programs.



[www.autism.ucla.edu](http://www.autism.ucla.edu)

Sponsored in part by The Autism Intervention Research Network on Behavioral Health funded by the U.S. Department of Health and Human Services Health Resources and Services Administration (Grant: UA3MC11055)



**PRESENTERS – CART Faculty from the Semel Institute for Neuroscience and Human Behavior;  
David Geffen School of Medicine at UCLA**

**SYMPOSIUM Co-Chair**

**Susan Y. Bookheimer, Ph.D.**

Professor of Psychiatry & Biobehavioral Sciences  
Joaquin Fuster Professor of Cognitive Neuroscience  
Program Director and Principal Investigator,  
NIH Autism Center of Excellence (ACE) grant to the  
UCLA Center for Autism Research & Treatment (CART)

**SYMPOSIUM Co-Chair**

**Daniel Geschwind, M.D., Ph.D.**

Professor of Neurology and Psychiatry  
Gordon and Virginia MacDonald Distinguished Professor  
of Human Genetics  
Director and Principal Investigator,  
UCLA Center for Autism Research & Treatment (CART)

**Pegeen Cronin, Ph.D.**

Assistant Clinical Professor, Child Psychiatry  
Clinical Psychologist, UCLA Autism Evaluation Clinic  
CART Principal Investigator, Assessment Core

**Mirella Dapretto, Ph.D.**

Associate Professor, Psychiatry & Biobehavioral  
Sciences CART Principal Investigator; Director,  
FPR-UCLA Center for Culture, Brain & Development

**Ted Hutman, Ph.D.**

UCLA Adjunct Assistant Professor  
CART Co-Investigator, Infants at Risk study

**Shafali Jeste, M.D.**

Assistant Professor, Psychiatry & Biobehavioral Sciences  
CART Principal Investigator  
Director, CART Electrophysiology Core Laboratory

**Connie Kasari, Ph.D.**

Professor, Education and Psychiatry  
Psychological Studies in Education  
CART Principal Investigator

**Elizabeth Laugeson, Psy.D.**

Clinical Instructor, Child Psychiatry  
Director, The Help Group – UCLA Autism Research  
Alliance; CART Principal Investigator, Pilot Grant Award

**James McCracken, M.D.**

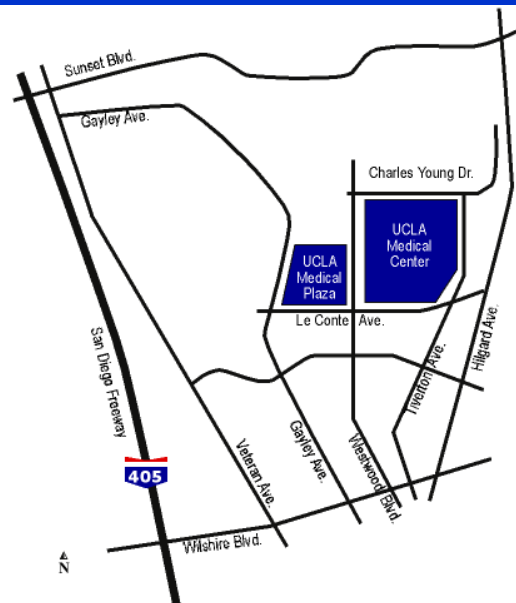
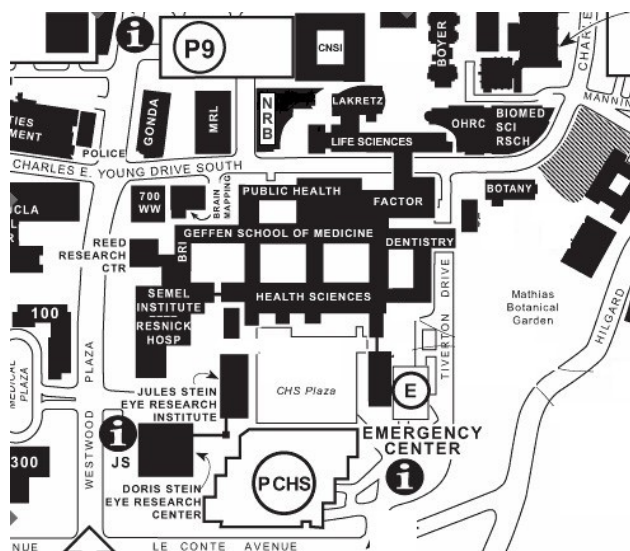
Professor of Psychiatry & Biobehavioral Sciences  
Joseph Campbell Professor of Child Psychiatry  
Director, Child and Adolescent Psychiatry  
CART Principal Investigator

**Bhavik Shah, M.D.**

UCLA Associate Clinical Professor, Child Psychiatry  
Medical Director, UCLA ABC Child Partial Program  
CART Co-Investigator

Background information for the speakers  
is available at the CART website's FACULTY pages.

[www.autism.ucla.edu](http://www.autism.ucla.edu)



**LOCATION:**

Neuroscience Research Building ("NRB" on map above) 635 Charles E. Young Drive South, Los Angeles, CA 90095  
UCLA Parking Information Kiosk ("i" on map above). Also, please visit CART website for directions, maps and parking.

**ENROLLMENT FORM**



**REGISTER EARLY - Limited Seating**

Please PRINT or type

**> Online registration closes Jan. 31<sup>st</sup>**

**“Autism 2012” Symposium  
Autism Spectrum Disorders: Research Update and Evidence-Based Treatment Models  
Presented by the UCLA Center for Autism Research and Treatment (CART)**

**Neuroscience Research Building Auditorium at UCLA  
Friday – February 3, 2012 8:00AM – 5:00PM (Registration & Breakfast 8:00-8:30)**

**\* Required information to enroll.**

Fees\* (check one box) *Fee includes course materials, continental breakfast, lunch and refreshments at breaks and an attendance certificate for Continuing Medical Education (CME) credits.*

- MD, PhD, PsyD, JD (doctorates) \$ 175
- All others, including RNs \$ 135

First Name\* \_\_\_\_\_ Middle Name/Init. \_\_\_\_\_ Last Name\* \_\_\_\_\_

Gender\*  Male  Female Email\* \_\_\_\_\_ Degree(s) \_\_\_\_\_

Last 4 Social Security Numbers \_\_\_\_\_ Specialties/Profession Title: \_\_\_\_\_

Address\* \_\_\_\_\_

City\* \_\_\_\_\_ State\* (or Province) \_\_\_\_\_ Zip\* \_\_\_\_\_ Country \* \_\_\_\_\_

Phone Number\* (\_\_\_\_) \_\_\_\_\_ Fax Number (\_\_\_\_) \_\_\_\_\_

**REGISTRATION INSTRUCTIONS:**

**Online**

**To enroll: go to UCLA CME Office website: <http://www.cme.ucla.edu/courses/> and click on “Autism 2012.”**  
Also, please visit CART website [www.autism.ucla.edu](http://www.autism.ucla.edu) and click on Autism Symposium at EVENTS page – for program schedule, speakers, map/directions/parking and other information including PDF file to print/download.

**Mail** - the completed enrollment form (this page) with registration fee payment (*mark box below for type*) to:  
David Geffen School of Medicine at UCLA; Office of Continuing Medical Education - "Autism 2012"  
10920 Wilshire Blvd., Suite 1060; Los Angeles, CA 90024-6512

- Check** marked “Autism 2012” made payable to the University of California Regents
- Charge card** (circle type): MC/Visa/Discover Card# \_\_\_\_\_ Expires (mo/yr) \_\_\_/\_\_\_

Cardholder Name \_\_\_\_\_ Billing ZIP: \_\_\_\_\_ Amount (circle): \$175 / \$135

*Cardholder signature:*

**FAX** - completed enrollment form with charge card information and your authorizing signature to (310) 794-2624.

**PHONE (through Feb. 2<sup>nd</sup>)** – Use your MasterCard, VISA, or Discover card. **Call (310) 794-2620**

*Cancellations* must be received in writing by January 31<sup>st</sup> and will be subject to a \$50.00 processing fee.

**No refunds will be given after January 31<sup>st</sup>.** A full refund will be provided if for any reason the course must be canceled or rescheduled. In the event of illness or other emergency, registered attendees may request permission for a substitute attendee to take their place (but only if the written request is received by February 1<sup>st</sup>).