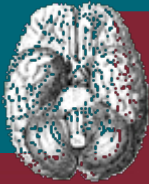


26th ISHN Meeting 2022 June 14-18 Rome (Italy)



ISHN



SAPIENZA
UNIVERSITÀ DI ROMA

ISHN President:

Prof. Boleslav (Slava) Lichterman

Organization:

ISHN Board, Prof. Peter J. Koelher

Dr. Elisabetta Sirgiovanni (Sapienza)

Dr. Manon Auffret





SAPIENZA

UNIVERSITÀ DI ROMA

The **Sapienza University** was founded in 1303 with the Papal bull in *Supremae praeminentia Dignitatis* and was located in the city center.

The **Campus Main**, the “Città universitaria,” was designed by Architect Marcello Piacentini and inaugurated in 1935.

Sapienza Main Campus is located in **San Lorenzo area**, close to Termini Station and not far from the city center. It includes 40 buildings.

Main entrance: **P.le Aldo Moro 00185 Rome (Italy)**

VIRTUAL TOUR: <http://virtualtour.uniroma1.it/>

Unit of History of Medicine and Bioethics

The **Museum and the Library of History of Medicine** are affiliated to the Sapienza **Department of Molecular Medicine**.

It is located in the Main Campus with an external entrance on **viale dell'Università 34a (Rome)**

Director in charge: Prof. Maria Conforti

Former Director: Prof. Gilberto Corbellini

Dept. of Medical Surgical Sciences and Biotechnology: Prof. Valentina Gazzaniga





SAPIENZA
UNIVERSITÀ DI ROMA



History of Medicine and Bioethics Unit

Founded by Adalberto Pazzini in **1938**, relocated in **1954**.

- **Museum of the History of
Medicine**

The museum is divided into three floors: the basement contains past dioramas; first floor is from prehistoric times to the 17th century; second floor from the 18th cent. to today. One of the MHM attractions is **the original Cerletti-Bini ECT apparatus prototype (1938)**.

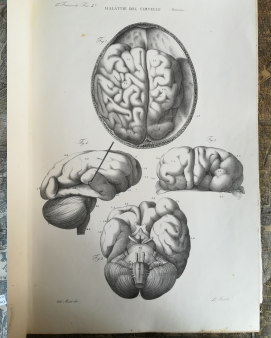
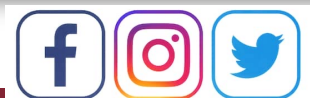
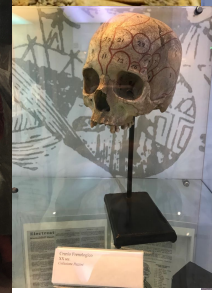
<https://web.uniroma1.it/museostoriamedicina/>

- **Library of History of
Medicine**

Collection of about 25.000 books from the 16th cent. to today. It contains also manuscripts.

Archives of the 19th-20th century: e.g. Italian Malaria School archive, Italian History of Genetics archive, archives connected to neurophysiological research and pharmacology.

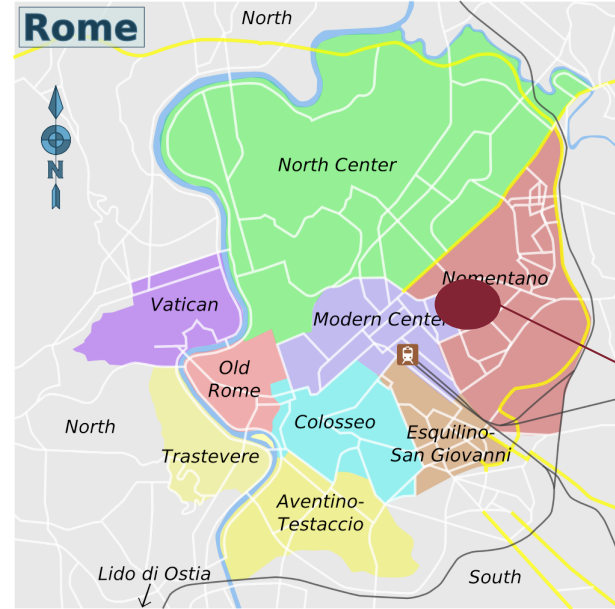
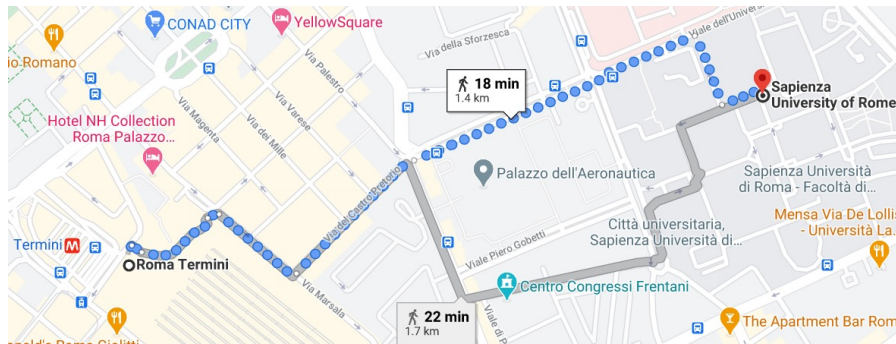
https://web.uniroma1.it/dip_dms/biblioteca/storia-della-medicina



Museum Director: Prof. Maria Conforti
Museum Curator: Dr. Alessandro Aruta
Library Responsible: Dr. Livia Castelli



SAPIENZA
UNIVERSITÀ DI ROMA



Sapienza

• Travel

Airports: Rome is served by 2 airports: Fiumicino (FCO) or Ciampino (CIA)

From the Airports: Leonardo Express Train, or Taxi (50 euros)

From Termini Station: 20 min walk (km 1.5), bus 310, or taxi

From Tiburtina station: autobus 163, 492, 71, or taxi

Metro: Line B (BLUE): Policlinico Station

